

## *St Anne's at St Mary-at-Hill*

Pastor in Charge

**Rev'd Eliza Zikmane**

Assistant Pastor

*Swahili Service*

**Rev'd Moses Shonga**

Assistant Pastor

*Ministry to Students and Children*

**Rev'd Sarah Farrow**

Director of Music

**Erik Eichelberger**

Administrator

**Nikki Renken**



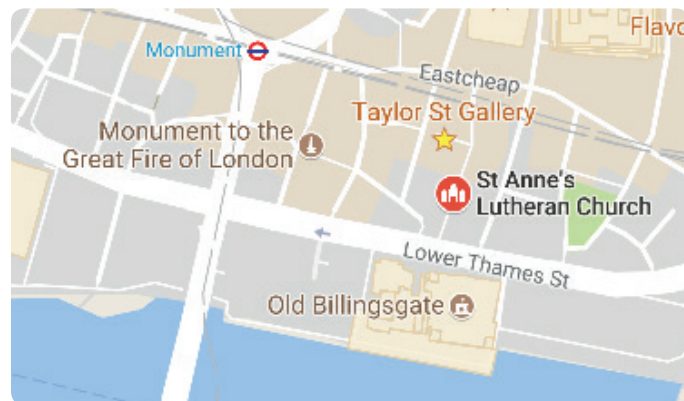
## *Come and visit us*

St Mary-at-Hill

Lovat Lane, Eastcheap,

London EC3R 8EE

(near Monument tube station)



[stanneslutheranchurch.org.uk](http://stanneslutheranchurch.org.uk)



020 7283 6305



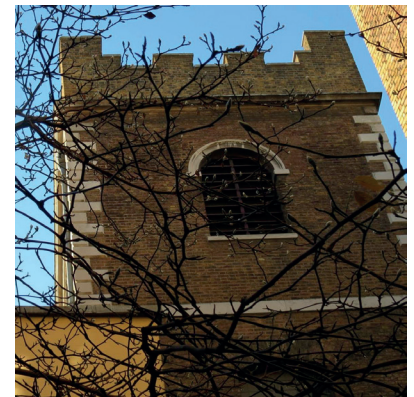
[admin@stanneslutheranchurch.org.uk](mailto:admin@stanneslutheranchurch.org.uk)



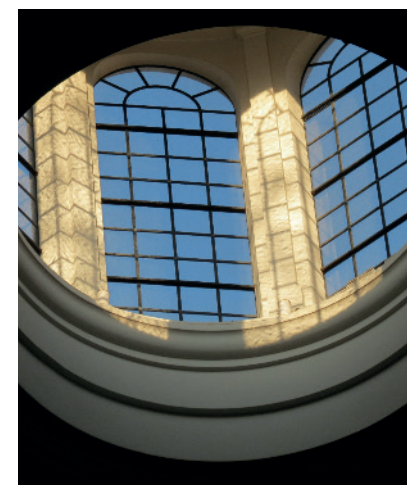
[/StAnnesLutheranChurch](https://www.facebook.com/StAnnesLutheranChurch)



[@LondonLutherans](https://twitter.com/LondonLutherans)



St Anne's  
Lutheran  
Church



## Welcome, Worship, Witness

St Anne's is a multi-cultural, multilingual Lutheran Church in the heart of London where everyone is welcome to participate in worship and fellowship.

---

*For by grace you have been saved through faith, and this is not your own doing; it is the gift of God*  
— Ephesians 2:8

---

**Welcome** St Anne's is a church that welcomes and serves all people, from all walks of life. We are an inclusive church where everyone is welcome and God's love is preached and practiced. Whether you are just visiting or looking for a new church to call home - we welcome you to this community.



**Worship** Every Sunday the Gospel is proclaimed and preached, and together we share in the Lord's Supper. We worship using Lutheran liturgy with music and prayer, in both English and Swahili. We believe that it is in worship that we receive God's gifts in Word and Sacrament.

---

*Music is a large part of our Lutheran identity. Music-at-Hill, originally an outreach ministry of the congregation, presents over 40 lunchtime concerts a year and runs a Bach Festival every July.*

---

**Witness** We believe that witnessing Jesus Christ's death and resurrection to others means living out our calling to do justice and serve our neighbour. And spreading the good news of the Gospel means speaking up for the voiceless, helping those in need, welcoming the stranger, and declaring God's love to all. We help others and feed them as Christ fed us.

## Our Services

### Holy Communion Every Sunday 11am

Every Sunday at 11am, we hold a service of Holy Communion in English. All are welcome! There is a special Children's Address and families are encouraged to experience the service together. Fellowship around tea and coffee is enjoyed after the service.

---

### Holy Communion Service in Swahili First Sunday 2pm

On the first Sunday of the month, we hold a service of Holy Communion in Swahili. There is a Sunday school for children to attend during the service. Fellowship around tea and coffee is enjoyed after the service.

---

### Bach Vespers Occasional Sundays

On selected Sundays St Anne's hosts Bach Vespers, in partnership with the City Bach Collective. This evening Lutheran service features a cantata by J. S. Bach and the music of his contemporaries, in an authentic combination of music and worship as Bach himself would have known it.